



CLARKE
ELECTRIC COOPERATIVE, INC.

Safety Driven • Energy Smart • Community Invested

Your Touchstone Energy® Cooperative 



Volume 83, No. 5 | May 2023

HEADLINES

SAFETY DRIVEN | ENERGY SMART | COMMUNITY INVESTED

Why Cooperatives Matter

I work for an electric cooperative. I don't think twice about why a cooperative is important and what it brings to me, my work and my home life. Because it is easy to take for granted the value it brings to our lives, I thought I would take a few moments to refresh your minds. 9-18-01-17

Our rural electric cooperative is 84 years old and is still as relevant today as it was when we were founded in 1939. The premise then and now is to improve our quality of life in rural areas. Bringing electricity to the rural areas was a big deal back then. It still is today.

Just think about the things you own and use daily that run on electricity: your cell phone, stove, washer and

dryer, maybe a welder, air compressor, you get the picture. All these things are designed to make our lives easier.

But how does this happen?

When you walk through the doors of Clarke Electric, you'll see the familiar faces of your friends and neighbors who work for the co-op and serve on the board of directors. Our board members, elected by our members, serve the membership by making sure we have a qualified CEO, workforce and resources to keep our power flowing.

They build connections



JODEE ECKELS
Communications / HR Manager

continued on pg. 4

COMMUNITY INVESTED



WINNER!
Maria D'Attilio



Clarke Electric is excited to announce that Chariton High School student Mariah D'Attilio will represent your cooperative on the annual Youth Tour trip to Washington, D.C., in June.

Mariah will join roughly 1,800 students from across the country in our nation's capital to learn more about U.S. history, cooperatives, and our government. In addition, she will participate in leadership training, engage with elected officials, network with her peers, and tour monuments and museums.

Mariah is the daughter of Ann and Tony D'Attilio of Derby. She is pictured with Jason Gibbs, manager of Member Services.

Clarke Electric believes supporting this program and investing in the next generation of co-op members is important to the economic future of rural areas.

Congratulations Mariah! We hope you have an awesome, educational, and enjoyable time on your trip!

Reading pays! We have hidden two of our members' account numbers in this issue. If you find your member location number, call during May to have \$10 deducted from your monthly energy account.

RECs Will Never Gamble on Reliability, Affordability

In late February, the *Des Moines Register's* Editorial Board published a reckless column calling for MidAmerican Energy and other Iowa electric utilities to abandon coal, "even if doing so also means taking some gambles on brownouts and blackouts, price volatility and newer technology."

I'm here to tell you that Iowa's locally-owned electric cooperatives will never gamble on our responsibility to provide reliable and affordable service to member-consumers.

Last summer's generation shortfall warning from the North American Electric Reliability Corporation (NERC) underscored the need for a diversified energy mix to ensure reliable electricity. And we all heard about the devastation that resulted from emergency blackouts during the February 2021 polar vortex crisis in Texas as demand for electricity greatly exceeded supply.

Your electric cooperative uses an "all of the above" generation strategy to ensure availability of power when you flip the light switch. Here are two realities in the electric industry today:

1. Many renewable energy sources like wind and solar are intermittent; they don't generate electricity when the sun doesn't shine or the wind doesn't blow. Other

generation sources like coal, natural gas and nuclear are



CHUCK SODERBERG
Iowa Association of
Electric Cooperatives

dispatchable, which means we can turn them on and ramp up production when needed.

2. Generally speaking, electricity must be simultaneously generated as it is consumed. This requires supply to be in constant balance with electric demand and we must be able to dispatch more electric generation quickly when needed, usually on very hot or very cold days as people increase the use of air conditioners or electric heat. Battery technology has yet to be developed which can adequately store electricity from intermittent sources on a utility scale for a long range of time.

Electric co-ops are transitioning to more renewable sources of generation when it is feasible to do so.

And we will continue to advocate for an "all of the above" energy strategy with state and federal policymakers because we refuse to gamble reliability, affordability or the trust you place in us.

THE COOPERATIVE DIFFERENCE

Director Election Time

Co-op seeks three candidates to run in September Annual Meeting election. If interested, call us at (800) 362-2154.

Clarke Electric is seeking member-consumers who are interested in getting involved in, and giving back to, their community by serving on the co-op's board of directors.

Three board seats will be part of the election during our Annual Meeting Sept. 11. Directors serve a three-year term and are a vital resource and voice for our cooperative business. Elected by and from the membership of Clarke Electric Cooperative, directors must have the time to attend monthly board meetings, special events or meetings, and educational seminars designed to keep them informed about the cooperative and electric utility industry.

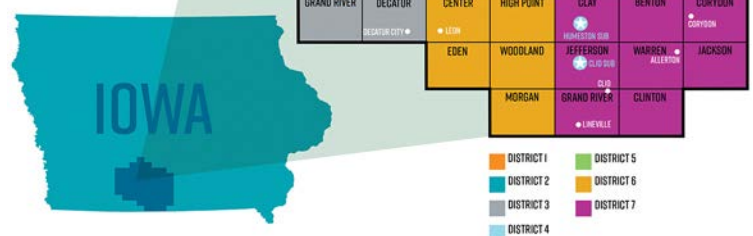
Districts 1 (Natalie Rydle), 3 (Cody Miller) and 7 (Larry Jackson, term limited, ineligible for re-election) will be on the ballot this year. Please refer to the map below to see the director districts up for election.

Excerpts from the bylaws and Articles of Incorporation:

Article III Section 2. Qualifications and Tenure. From and after the annual meeting in 2014, "No member shall be eligible to become or remain a director or to hold any position of trust in the Cooperative, whose primary residence is not served by the Cooperative, or who is in any way employed by or who is married to an employee of the Cooperative or who has been an employee or married to an employee of the Cooperative within the past three years or who is financially interested in a competing enterprise or a business selling electric energy or supplies to the Cooperative." 31-19-01-01

Article III, Section 3. Nomination and Election of Directors. It shall be the duty of the board to appoint, not less than 60 days and not more than 90 days before the date for the meeting of members at which directors are to be elected, a committee on nominations.....Said committee shall consist of two members from each of the districts where the terms are to expire following the annual meeting. A director of the Cooperative, who is ineligible to be a candidate because of tenure, may be appointed to the nominating committee. The committee shall prepare and post at the principal office of the cooperative, at least 45 days before the meeting

continued on pg. 4





THANK YOU!

Kim Griffin
Marcella Welsch
Cori Smith
Stephanie Moore

Billing specialist
Corporate accountant
Customer service/cashier
Operations & Engineering
administrative assistant

Admin Support Team is Critical to Co-op Success

Clarke Electric Cooperative has a team of four administrative professionals who are the hub of our cooperative. Staff and our member-consumers rely on them every day to keep the information flowing both inside and outside our headquarters' walls.

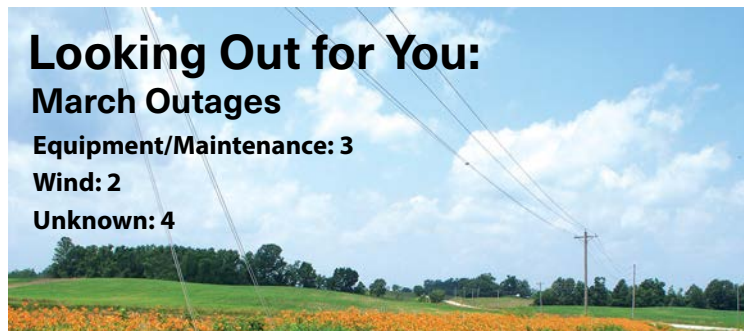
A day in the life of our administrative professionals varies from moment to moment and requires

flexibility and organization. They are the smiles you'll see when you enter the office, and the helpful voice on the other end of the phone.

At the end of April every year we celebrate these unsung heroes during Administrative Professionals Day when we can recognize their contributions and skills that keep our co-op running smoothly.

Looking Out for You: March Outages

Equipment/Maintenance: 3
Wind: 2
Unknown: 4



COMMUNITY INVESTED

Help Us Shine A Light on Community Volunteers!

The Shine the Light contest is back in June 2023!

Again this year, Clarke Electric is excited to join electric cooperatives across the state "shining the light" on local volunteers in our communities. Nominations will be accepted June 1st-30th at www.iowashinethelight.com. Sponsored by the Touchstone Energy Cooperatives of Iowa, three winners will each receive a \$2,500 donation to their local charity or nonprofit.



Member-consumers and employees of Iowa's electric cooperatives are eligible to nominate local volunteers. If you receive electricity from Clarke Electric, you're a co-op member-consumer and we encourage you to nominate someone who is making a positive impact in the community. The volunteer being nominated does not need to be a co-op member-consumer. Minors may be nominated with consent from their parents or legal guardians.

The three winners will be announced in September and featured in Iowa Electric Cooperative Living magazine. Contest rules and more information are available at www.iowashinethelight.com.

Help us shine the light on community volunteers this summer and consider making a nomination!

Energy Efficiency Tip of the Month

The location of your thermostat can impact your HVAC system's ability to maintain an ideal indoor temperature. For maximum accuracy, thermostats should be placed in the center of the home, away from air vents, plumbing pipes and exterior doors. Avoid placing items like lamps and televisions near your thermostat or installing thermostats in rooms that tend to feel warmer or colder than the rest of the home. Don't place furniture in front of the thermostat, which can block air flow and result in inaccurate readings.



WHAT CAN WE DO FOR YOU? @ cecnet.net



Statewide
outage map



Leased Light
Program



SmartHUB



Rebates &
Online Forms



Operation
Round-UP



Call Before
You Dig



Email
newsletters

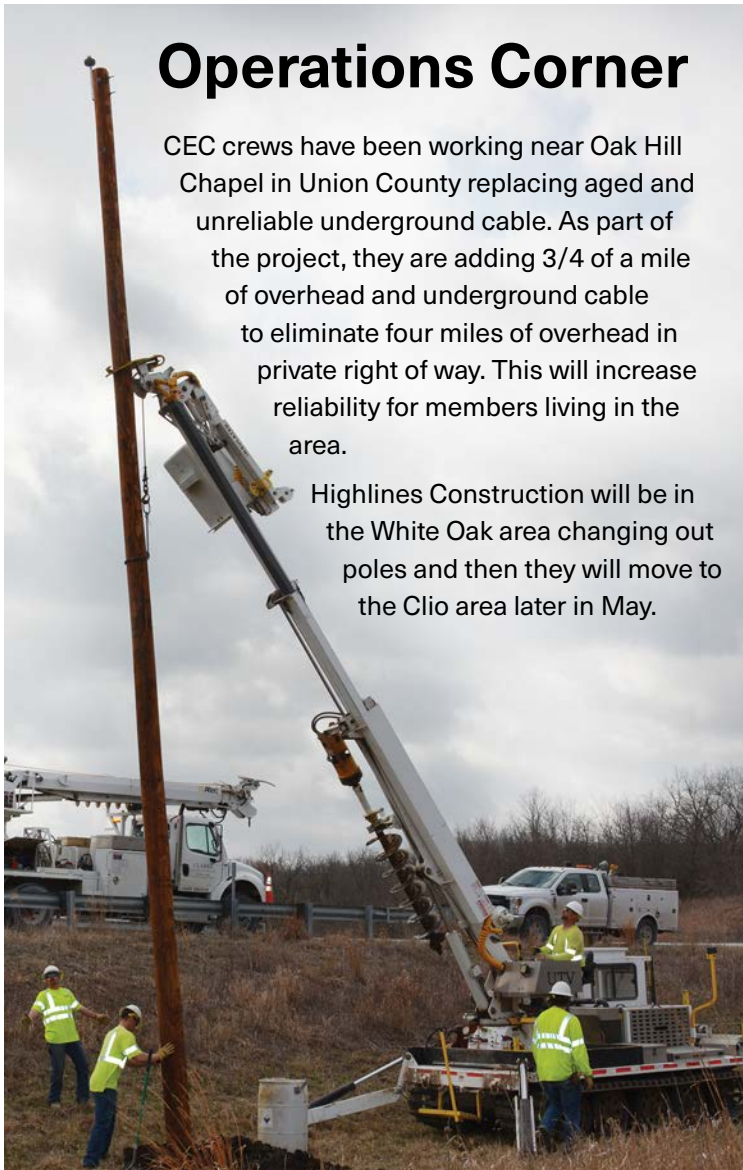


RECare

Operations Corner

CEC crews have been working near Oak Hill Chapel in Union County replacing aged and unreliable underground cable. As part of the project, they are adding 3/4 of a mile of overhead and underground cable to eliminate four miles of overhead in private right of way. This will increase reliability for members living in the area.

Highlines Construction will be in the White Oak area changing out poles and then they will move to the Clio area later in May.



Cooperatives...from pg. 1

with state representatives to make sure laws created will benefit cooperative members. The CEO hires knowledgeable employees to help us use energy wisely. We employ competent linemen to safely construct and maintain our power lines. And, we can access a larger network of cooperative employees if we are impacted by a large storm through mutual aid.

Being a member of Clarke Electric means you have a voice in the way the cooperative is run, you receive a patronage dividend, and you have a safe, affordable and reliable energy source. You can count on us to be here for another 80 years.

For me that's a win-win. I hope you think so too.



Election...from pg. 2

a list of the nominees for directors. The committee shall be encouraged, but shall not be required, to nominate not less than two candidates for each district for which a director is to be elected.

Any fifteen or more members acting together may make other nominations by petition not less than 45 days prior to the meeting and the secretary shall post such nominations at the same place where the list of nominations made by the committee is posted, providing that said nominations made by petition shall be limited to members from the district for which a director is to be elected and the petitioners must also be from said district.

(b) Election of Directors. "Election of directors shall be by printed ballot. The ballot shall list the candidates nominated by the committee on nominations and by petition, if any, arranged by the districts. The secretary shall mail a ballot marked, "Ballot for Election of Directors" and a statement of the number of directors to be elected and showing separately the nominations made by the committee andby petition. The statement shall also contain and inform the members of the manner in which they may vote by mail for directors as provided in this section."



CLARKE
ELECTRIC COOPERATIVE, INC.

Safety Driven • Energy Smart • Community Invested

Your Touchstone Energy® Cooperative



P.O. Box 161 | 1103 N. Main | Osceola, IA 50213-0161
(641) 342-2173 | (800) 362-2154
cecnet.net

OFFICE HOURS

Mon.-Fri.: 7:30 AM - 4 PM | Outside depository available 24/7

BOARD OF DIRECTORS

President: Ed White
Vice President: Randy Rouse
Secretary: Larry Keller
Treasurer: Lydda Youmans
Asst. Sec./Treasurer: Randy Barnard

Directors
Larry Jackson
Marni Kelso
Cody Miller
Natalie Rydl

GENERAL MANAGER

David Opie

This institution is an equal opportunity provider and employer.