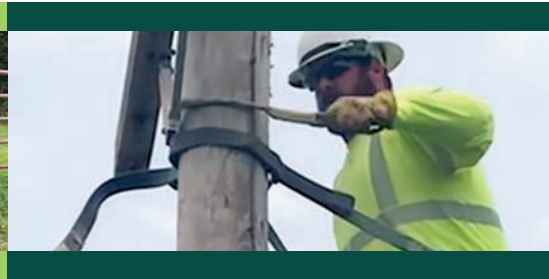




CLARKE
ELECTRIC COOPERATIVE, INC.

Safety Driven • Energy Smart • Community Invested

Your Touchstone Energy® Cooperative 



Volume 82, No. 6 | June 2022

HEADLINES

SAFETY DRIVEN | ENERGY SMART | COMMUNITY INVESTED

Welcome Natalie Rydl, District 1 Director

Natalie Rydl has been appointed by the Clarke Electric Cooperative Board of Directors to fill the District 1 board seat previously held by Bill Willis, who passed away in April.

Natalie is a native of Osceola, graduating from Clarke Community Schools and AIB College of Business. She lives in Squaw Township of Warren County in a newly renovated farmhouse and works as an account manager for

Workspace in Des Moines.

"I'm excited to support an incredible

cooperative that employs an incredible team of employees," she said.

Natalie will be placed on the ballot for the Annual Meeting as she fulfills the final year of the three-year term.




The Clarke Electric office will be
CLOSED
Monday, July 4
We wish all our members a safe and happy holiday!

Nominate a local volunteer and they could win \$2,000 for their favorite charity!

Contest entries accepted through June 30 at IowaShineTheLight.com



Powering On Despite Supply Chain Disruptions

At Clarke Electric Cooperative, we take our job of providing power to our member-consumers seriously. We want you to be able to flip the switch and have electricity whenever and wherever you need it.

But this year we're facing new challenges as we seek to maintain this level of service. Just as you have likely experienced rising prices, material shortages and long lead times for delivery, so too has the utility industry, including Clarke Electric. 55-36-01-01

Global supply chain tension, pandemic shut-downs, the Russia-Ukraine conflict and labor shortages are contributors



DAVE OPIE
General Manager

continued on page 2

Reading pays! We have hidden two of our members' account numbers in this issue. If you find your member location number, call during June to have \$10 deducted from your monthly energy account.

Opie: Plan Ahead for New Service Connections

from pg. 1

to this current state. Thankfully, our vendors are working with us to prioritize the supplies and equipment we need to complete our projects as we manage our inventory.

It's a busy time of year for our operations department as our linemen build new services, replace aged poles, lines and failing equipment. Typically, we don't keep a large amount of material in stock, but last fall we began noticing items were getting harder to obtain. In response, we began purchasing needed supplies and material for the 2022 projects listed in our work plan.

This shortage of materials also impacts our budget, making it difficult to establish the cost of operations and maintenance projects. At this point in time, forecasting

is more like looking inside a crystal ball for answers: cloudy at best.

What does this mean for you? If you are planning a new service or a service upgrade, be prepared to hear that you might have to wait longer than you anticipated for it to be completed. Planning ahead for a new service or upgrade will help so we can make sure the materials ordered for your project arrive on time.

We don't know how long this complexity of the world issues is expected to continue. But the utility industry and Clarke Electric are well versed in these sorts of challenges. We promise to continue monitoring the supply and demand chain, making necessary adjustments to keep the power flowing to your homes and businesses.

THE COOPERATIVE DIFFERENCE

Clarke Electric will hold its 82nd Annual Meeting of the Membership Monday, September 12, 2022. The drive-through event will be held at the CEC headquarters, 1103 N. Main, Osceola. Watch this newsletter for more details!

Save the Date!

Contact Us Before You Build a New Grain Bin

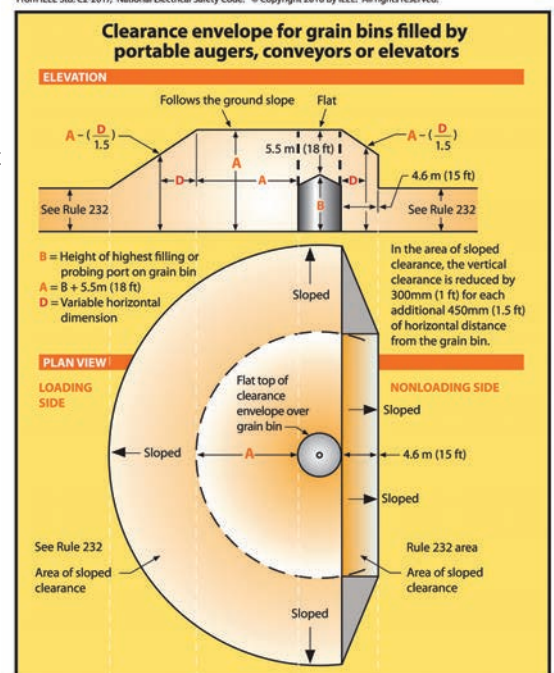
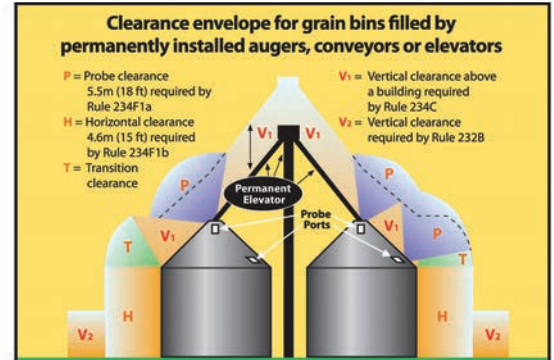
If you're considering building a new grain bin this spring, remember that it's important to first contact Clarke Electric Cooperative.

Your cooperative will provide assistance in planning for a safe environment for everyone working and living around grain bins. The State of Iowa requires specific clearances for electric lines around grain bins, with different standards for those filled by portable and permanent augers, conveyors and elevators.

The drawings on this page show the specific clearances required for both scenarios. If you have any questions, please call Clarke Electric at (800) 362-2154.

According to the Iowa Electric Safety Code found in Iowa Administrative Code Chapter 199 -- 25.2(3) b.: *An electric utility may refuse to provide electric service to any grain bin built near an existing electric line which does not provide the clearances required by the American National Standards Institute (ANSI) C2-2017 "National Electrical Safety Code," Rule 234F. This paragraph "b" shall apply only to grain bins loaded by portable augers, conveyors or elevators and built after September 9, 1992, or to grain bins loaded by permanently installed augers, conveyors, or elevator systems installed after December 24, 1997. (As adopted by the Iowa Utilities Board)*

Clarke Electric Cooperative is required by the Iowa Utilities Board to provide this annual notice to farmers, farm lenders, grain bin



From IEEE Std. C2-2017, "National Electrical Safety Code." © Copyright 2016 by IEEE. All rights reserved. The IEEE disclaims any responsibility or liability resulting from the placement and use in the described manner.

continued on next page

Congratulations, CEC scholarship recipients!

Clarke Electric Cooperative has awarded \$9,000 in scholarships to 17 local graduating seniors. Awards will be given to the student's selected university or trade school upon the completion of their first semester and enrollment in the second semester. Students from Clarke, Central Decatur, Chariton, Indianola, Interstate 35, Mormon Trail, Martensdale-St. Marys, Murray, Southeast Warren and Wayne school districts who are CEC member-consumers are eligible to apply for the annual scholarship.

Abram Hall	Central Decatur
Tyler Binning	Clarke
Kacey Boyer	Clarke
Konrad Boyer	Clarke
Colby Feehan	Clarke
Shayla Hembry	Clarke
Ryleigh Luce	Clarke
Breanna Selsor	Clarke
Hanna Wisniewski	Clarke
Hanna Bedwell	Clarke
Cody Boyle	I-35
Abigail Fantz	I-35
Colton Vander Werf	Martensdale-St. Marys
Jaclyn Kleve	Martensdale-St. Marys
Abbe Baumfaulk	Murray
Wyatt Gannon	Murray
Calleigh Klein	Murray

Grain Bin...from previous page

merchants, and city and county zoning officials. If you have any questions concerning clearance regulations, please contact the cooperative.

Disclaimer: These drawings are provided as part of Iowa electric cooperatives' annual public information campaign and are based on the 2017 edition of the National Electrical Safety Code. To view the actual drawings, refer to that publication. Every care has been taken for the correctness of the contents for these drawings. However, the Iowa Association of Electric Cooperatives and its member cooperatives accept no liability whatsoever for omissions or errors, technical inaccuracies, typographical mistakes or damages of any kind arising from the use of the contents of these drawings, whether textual or graphical.

Operation Round-Up Supports Local Projects

Funds from Clarke Electric consumer-members who choose to round up their utility bills each month have been dispersed to aid in two local projects.



In April, the CEC Operation Round-Up board approved a donation of \$2,500 to Friends of Little River Scenic Pathway to help build an accessible restroom facility at the Little River Recreation Area, located just west of Leon. The 2,200-acre park includes a 787-acre lake and is a popular destination for fishing, water skiing, swimming and camping. Funding for the \$32,000 restroom project was also secured from the AARP through the local trails committee and other fundraising efforts. *Pictured above, from left, are: Tonya Lindsey, Isaiah Eastridge, Dennis Burlingame, Doug Kouba, Jason Gibbs, Kayla Clausen and Chris Coffelt.*

The Operation Round-Up board also approved a donation of \$5,000 to the Clarke County Historical Society to help rehabilitate the historic Harlan-Pollard Log Cabin. The 1850s-era one room cabin measures 12'x12' and has fallen into disrepair after being moved from its original location on the Harlan farm to the Clarke County Fairgrounds and moved again to its current location on the southern edge of Osceola. The total project cost is estimated at \$15,000.



Note to our members: If you have more than one account and would like to consolidate them into one itemized bill, please contact our office for details. Ask for "invoice account options."

WHAT CAN WE DO FOR YOU? @ cecnet.net



Statewide outage map



Leased Light Program



SmartHUB



Rebates & Online Forms



Operation Round-UP



Call Before You Dig



Email newsletters



RECare

More Than One Way to the Top

At far right, CEC Apprentice Lineman Zach Stewart repairs a pole top in the Clio substation area using a co-op bucket truck.



Journeyman Lineman Adam McCuddin

Sometimes, however, bucket trucks aren't an option and linemen must use their climbing skills to reach the top and complete the job. At right is Journeyman Lineman Adam McCuddin practicing his pole climbing skills.

Climbing the pole involves a much greater effort and requires the lineman to wear up to 50 lbs. of gear!



Apprentice Lineman Zach Stewart

Call Us Before Installing Solar Panels

The number of residential and agricultural utility customers installing solar on their properties is growing in Iowa.

If you are a CEC member-consumer who is considering installing solar at your home or farm, please contact the cooperative before signing any contracts.

As solar gains popularity, we want to be sure you understand how a solar interconnection with our system can impact your current account and billing rate. 20-27-01-01

Call us at (800) 362-2154 to discuss your options before investing in solar.

Looking Out for You:

April Outages

- Motor vehicle: 3**
- Lighting: 2**
- Equipment failure: 2**
- Construction: 1**
- Trees: 1**
- Unknown: 1**

Energy Efficiency Tip of the Month

If you're looking to add smart technology to your home, smart plugs are inexpensive and can be used to control lighting and other electronic devices through a smart phone app. Use them to conveniently manage lighting, home office equipment, video game consoles and more.



CLARKE
ELECTRIC COOPERATIVE, INC.

Safety Driven • Energy Smart • Community Invested

Your Touchstone Energy® Cooperative 



P.O. Box 161 | 1103 N. Main | Osceola, IA 50213-0161

(641) 342-2173 | (800) 362-2154
cecnet.net

OFFICE HOURS

Mon.-Fri.: 7:30 AM - 4 PM | Outside depository available 24/7

BOARD OF DIRECTORS

President: Ed White
Vice President: Randy Rouse
Secretary: Larry Keller
Treasurer: Lydda Youmans
Asst. Sec./Treasurer: Randy Barnard

Directors
Larry Jackson
Marni Kelso
Cody Miller
Natalie Rydl

GENERAL MANAGER

David Opie

This institution is an equal opportunity provider and employer.