

Volume 82, No. 7 | July 2022

HEADLINES

SAFETY DRIVEN | ENERGY SMART | COMMUNITY INVESTED

A Summer of Extremes Could Impact Members

The potential for extreme hot temperatures over the summer months combined with high seasonal electric use could intermittently impact member-consumers of Clarke Electric Cooperative.

Clarke Electric continues to monitor reports from the Midcontinent Independent System Operators (MISO) regarding possible generation shortfalls over the next several months. While Clarke Electric's power supplier, Central Iowa Power Cooperative (CIPCO), has met its generation capacity requirements for the summer, the potential shortfalls in the overall MISO system could impact Iowa. In response, and to maintain the balance and stability of the electric grid

within its territory, MISO may initiate temporary controlled load interruptions.

MISO manages energy supply and demand in real-time generation within its footprint across the middle U.S. and parts of Canada, including about 90% of Iowa, to ensure electricity supply and demand are balanced. However, a shortfall is caused by several factors, including a simultaneous increase in electric usage and a reduction in coal, nuclear and natural gas power plants that are closing faster than new sources of generation can replace them.

"Although wind and solar play a much larger role in today's energy industry, we must maintain an 'all of the above'

continued on page 2

ENERGY SMART

Together We Can
BEAT the
PEAK

Follow these tips to lower demand and the effect on your bill:

Take these steps to use less energy during the peak hours of 3-8 PM to help us save on costs - savings we pass directly back to you!

- Raise thermostat 2-3 degrees during peak hours.
- Use fans to feel 4-6 degrees cooler.
- Turn off and unplug non-essential lights and electronics.
- Grill out instead of running the oven.
- Take shorter showers to reduce water heater use.
- Leave home to run errands or cool off at the pool.
- Keep windows, doors and blinds closed.

Youmans Receives Board Leadership Certificate

Director Lydda Youmans recently completed educational requirements to obtain the Board Leadership Certificate from the National Rural Electric Cooperative Association (NRECA).



The program consists of a series of courses focusing in greater depth on specific electric cooperative industry and governance issues such as risk management, technology, and policy development.

Congratulations, Lydda, on your dedication to the cooperative!

Reading pays! We have hidden two of our members' account numbers in this issue. If you find your member location number, call during July to have \$10 deducted from your monthly energy account.

Thank You, 2022 Nominating Committee



The Nominating Committee met June 13 to select candidates to run in the upcoming annual election. The full slate of candidates will be announced in the August newsletter.

Members of this year's Nominating Committee are: District 1 – Cindy Flaherty, District 2 – Tom Carson and Brad Howe, District 4 – Marianne Lester and Marshall Hildreth, District 5 – John Sullivan and Frank Riley.

It is the task of the committee to review the members in

the affected districts to find a candidate that is interested and willing to serve on the board. The committee follows the guidelines set forth in the by-laws to select at least one candidate to run against the incumbent when possible. If the district is open, they will select two candidates when possible. If you have an interest in serving as a board member, please contact the cooperative. 56-24-03-00

The election will be held as part of the Clarke Electric annual meeting Sept. 12.

Extremes... from pg. 1

strategy that also includes coal, natural gas and nuclear to keep the lights on when the wind stops blowing and the sun stops shining," said General Manager Dave Opie. "We aren't at the point yet where battery technology allows for renewable energy sources to be stored and used at any time."

You Can Help

"The more member-consumers we have conserving energy, the better

for our cooperative," Opie said. "Energy prices are very high during peak periods and that impacts the power supply cost to everyone. If we all make a few modifications in when and how we use energy, we can make a difference together."

Public notification of any power interruptions will be announced on the CEC Web site, www.cecnet.net, and Facebook page, @CEClowa.

Update from the Operations Department

The summer construction season is always a busy time for our linemen. Currently, our crews are busy constructing three-phase lines to the Iowa Select Farms' Derby hog confinement. And west of Murray, crews are installing three-phase regulator banks at the new Roeslein Alternative Energy, LLC project. Linemen are also working on the Lake Ahquabi State Park Renovation Project, rebuilding the electric infrastructure as the park is undergoing complete renovation. Individual new home construction and service upgrades are scheduled and completed as material supply and time permits.



CHAD MCINTOSH
Manager of Operations



CEC crews install new 3-phase regulator banks for the Roeslein Alternative Energy project.

Supply chain delays beyond our control continue to impact our work timelines and budget. We have found that the lead time for wooden poles has shortened slightly, while the transformers, metering cabinets and conductors continue to have very long lead times. We are doing our best to minimize the impact to our members, while delivering a safe and reliable power source.

SBS, our pole contractor, will be testing poles in the Grand River substation area. Midwest Spray Team, our spraying contractor, will be spraying brush and undergrowth in the Lacona and Medora substation areas. Both of these contractors help our cooperative stay on our rotation schedule to minimize problems and increase reliability.

Looking Out for You:

May Outages

| | |
|-----------------------------------|------------------|
| Equipment/Maintenance Failure – 8 | Maintenance – 2 |
| Unknown – 5 | Animal/Bird – 1 |
| Lightning – 4 | Construction – 1 |
| Trees – 3 | |



ROW Clearing Set for Late Summer

Again this year, Clarke Electric Cooperative has contracted with Midwest Spray Team to spray trees and underbrush in the Medora and Lacona substation areas starting mid-July.

A right-of-way (ROW) refers to the strip of land underneath or around power lines that your electric cooperative has the right and responsibility to maintain and clear.

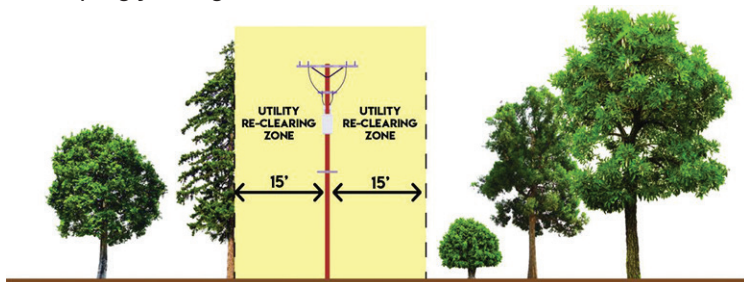
Trees must grow at a distance far enough from conductors where they will not cause harm to individuals or disruption in electrical service.

Clearing the ROW is critical to keeping your lights on.

An average of 15% of power interruptions occur when trees, shrubs or bushes grow too close to power lines.

ROW clearing work consists of a combination of tree and brush pruning; removal of hazardous trees (trees growing too close to power lines) and chemical treatment of smaller trees in the ROW to impede future growth.

Please contact Clarke Electric if you decide to trim or remove trees near any power service or line. For safety reasons, never trim a tree in the ROW zone on your own.



Energy Efficiency Tip of the Month

The combined use of large appliances like dishwashers, clothes dryers and washing machines account for the largest percentage of electricity use in the average U.S. home. Take small steps to save energy when using these appliances. Only run full loads in the dishwasher, and thoroughly scrape food from dishes before loading. Dry towels and heavier cottons separate from lighter-weight clothing, and clean the lint screen after every use. Wash clothing in cold water to save energy used to heat water.



2021 CIPCO Power Supply Report

In 2021, CIPCO reaffirmed its commitment to moving forward with operations and strategies that ensure safe, reliable, and cost-effective power for our 13 Member-owners.

We witnessed multiple new generation sources come online to support the power needs of CIPCO's member systems, like Clarke Electric. The \$85 million Summit Lake expansion, the largest project in CIPCO's 75-year history, realized a successful "first fire" of the new natural gas-reciprocating engines. As CIPCO continued testing electrical systems, tuned emissions control equipment and completed the final performance test, full commercial operation of the new engines was achieved on April 15 and has performed well.

Adding to CIPCO's generation mix through Power Purchase Agreements (PPA) were the commercial operation achievements of both Wapello Solar, LLC, a 100 MW_{AC} solar facility owned by Clēnera, and Independence Wind, a 54 MW facility in Delaware County owned by BHE Renewables. Both projects enhance CIPCO's generation mix as a source of low-cost power, providing needed energy and capacity across the system. This diversity in generation is critical to CIPCO's ability to effectively serve Clarke Electric Cooperative.

On the heels of Wapello Solar's launch in April, CIPCO and Clēnera announced plans for a new 100 MW_{AC} PPA, Coggon Solar, in northern Linn County.

Clarke Electric Cooperative and CIPCO strive to provide safe, affordable, and reliable power to our consumer-members. Each year, CIPCO completes a number of line and substation projects to ensure safe and reliable electric delivery, including nearly 44 miles of transmission line work in 2021.

In February, a large portion of the country experienced a major snow and ice event, followed by record cold temps that debilitated utilities across the country. Energy demand and associated prices quickly moved upward as a number of generation assets were rendered unusable in parts of the country not accustomed to such cold weather. While CIPCO and its members largely escaped power outages, the financial impacts were felt throughout the year. And in December,



RANDY ROUSE
Representative on CIPCO Board of Directors

continued on page 4

WHAT CAN WE DO FOR YOU? @ cecnet.net



Statewide outage map



Leased Light Program



SmartHUB



Rebates & Online Forms



Operation Round-UP



Call Before You Dig



Email newsletters



RECare

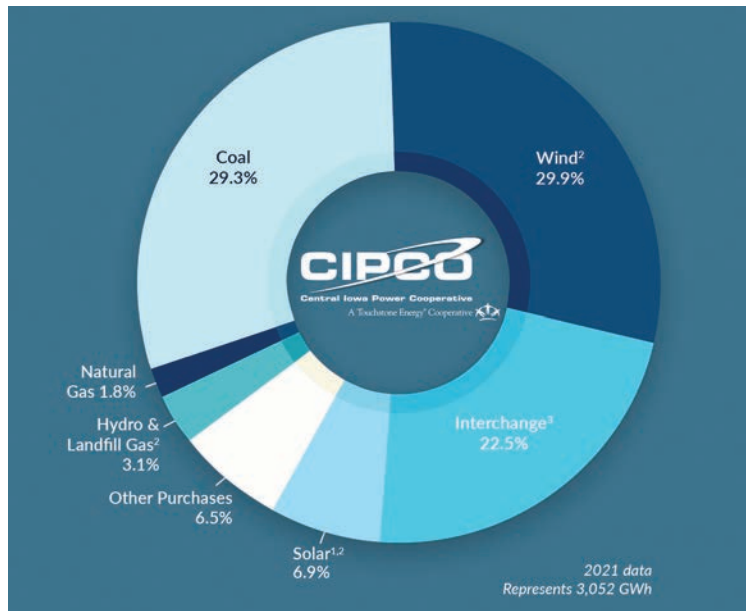
Iowa experienced the first-ever recorded derecho that brought tornadoes with it as well. The one-day event caused significant damage to 69 kV and 161 kV lines and structures.

CIPCO's commitment to reliability led to a system-wide outage rate of 0.29 hours per consumer without the December derecho and 1.31 with the derecho included.

Despite rising energy costs in 2021, both Standard & Poor's and Fitch Ratings maintained CIPCO's 'A' ratings which confirm CIPCO's financial strength. Returning patronage capital is a fundamental

component of the cooperative business model. CIPCO remains dedicated to sound financial practices that allow margins to be returned to its members in the form of patronage. In 2021, CIPCO returned patronage totaling \$379,680 to Clarke Electric Cooperative.

I want to thank you for the privilege to serve on both the Clarke Electric Cooperative and CIPCO board of directors. The actions we take are designed to strengthen our systems and ensure CIPCO is well-positioned to serve its member-owners.



1 CIPCO's purchase power agreement for Wapello Solar LLC locks in stable, long-term pricing and avoids the risks associated with rising fuel costs. Renewable energy certificates (RECs) are not included in this agreement.

2 CIPCO invests in the development of renewable energy projects in several ways. We operate six small-scale solar arrays near communities we serve and retain the renewable energy certificates associated with each. We also contract with energy producers for the electricity output from wind, hydro, and methane gas from a landfill (converted into electricity). CIPCO cannot claim these resources as renewable within our supply portfolio as we have either sold to third parties or do not receive the renewable attributes associated with the electricity produced from these renewable power sources. By selling these attributes (RECs), we not only support other organizations in meeting their renewable energy goals, we also generate revenue to help us lower our wholesale power rate to our 12 Member-owner distribution cooperatives and 15 municipalities.

3 A percentage of market purchases exist within the portfolio to meet additional supply needs not covered by existing contracts or CIPCO-produced generation. Weather volatility and unplanned operational events at power plants may also impact market purchases.

Co-op Staff At Job Fair

Clarke Electric Cooperative staff recently spent the afternoon at Clarke Community Schools 2022 Job Fair.

"It was an excellent opportunity to let kids know that there is high demand and good money in being an electric line worker," said Chad McIntosh, manager of Operations. 21-22-09-00



Chad McIntosh and Manager of Engineering Brad Wilson talked to Clarke CSD students during a recent job fair.

Students who graduate from a certified lineman school or some community colleges that offer a powerline program can make more than \$60,000 after just 12 months of schooling. According to Salary.com, the average journeyman lineman salary in Iowa is \$79,826.

Considering solar? Call Us First

As solar gains popularity, we want to be sure you understand how a solar interconnection with our system can impact your current account and billing rate.

Call us at (800) 362-2154 to discuss your options before investing in solar.



CLARKE
ELECTRIC COOPERATIVE, INC.

Safety Driven • Energy Smart • Community Invested

Your Touchstone Energy® Cooperative



P.O. Box 161 | 1103 N. Main | Osceola, IA 50213-0161
(641) 342-2173 | (800) 362-2154
cecnet.net

OFFICE HOURS

Mon.-Fri.: 7:30 AM - 4 PM | Outside depository available 24/7

BOARD OF DIRECTORS

President: Ed White
Vice President: Randy Rouse
Secretary: Larry Keller
Treasurer: Lydda Youmans
Asst. Sec./Treasurer: Randy Barnard

Directors
Larry Jackson
Marni Kelso
Cody Miller
Natalie Rydl

GENERAL MANAGER

David Opie

This institution is an equal opportunity provider and employer.